

XJTLU Online Learning and Teaching Technology Guide

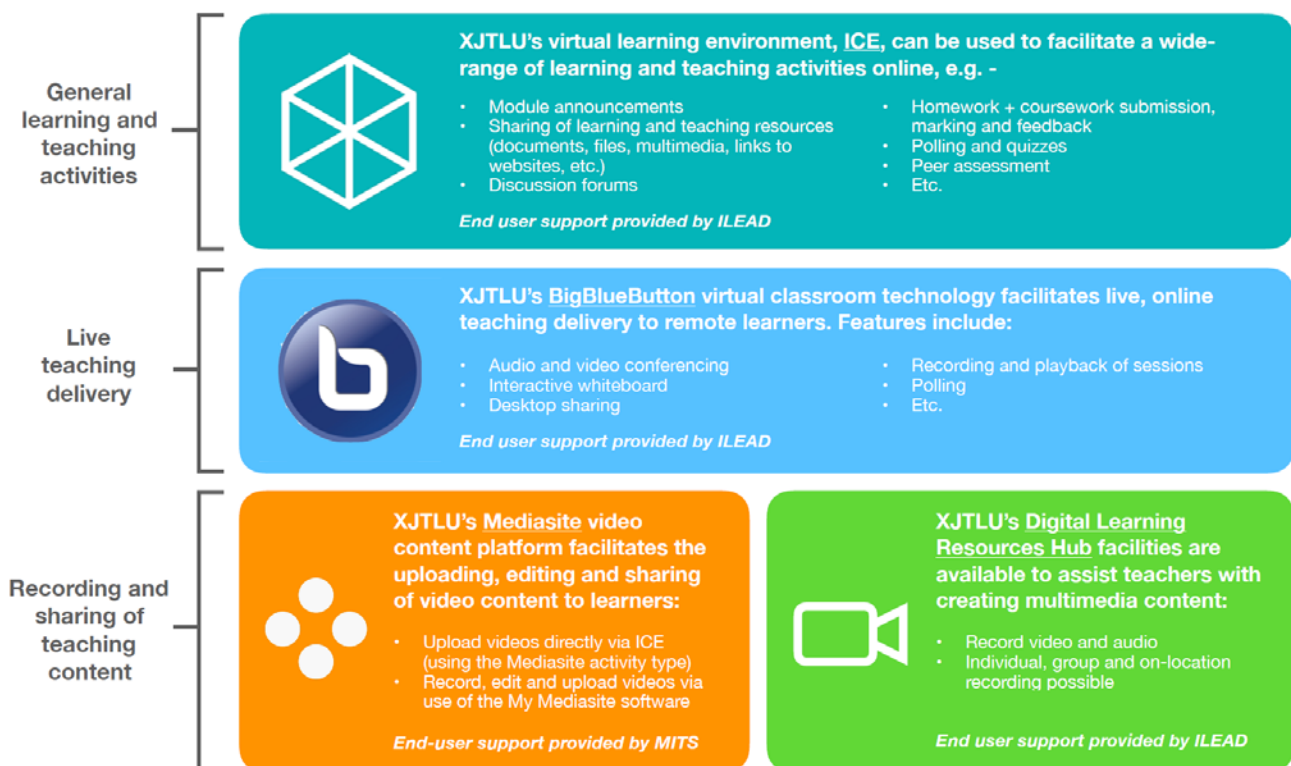
Hello Staff,

MITS and ILEAD have been working to improve the online learning and teaching environment here at XJTLU. We are pleased to announce that we have several platforms and applications working together to bring you an intuitive online learning and teaching experience.

For more information, please visit the [Online Learning and Teaching Technology Support area on ICE](#)

XJTLU Online Learning and Teaching Technology Guide ^{v1.0}

Use this guide to familiarise yourself with the various institutional technologies available to support your online learning and teaching delivery. For more information, please visit the [Online Learning and Teaching Technology Support area on ICE](#).



XJTLU

[ICE](#) is XJTLU's learning management system (LMS). It can be used to facilitate a wide range of learning and teaching activities online. Support provided by ILEAD, contact ICE@xjtlu.edu.cn for support.

BigBlueButton (BBB) is XJTLU's virtual classroom platform. It is used to provide live online teaching to remote learners. Support provided by ILEAD, contact ICE@xjtlu.edu.cn for support.

[Mediasite](#) is XJTLU's internal streaming video platform that is being used to support remote online learning and teaching activities. Support provided by MITS, contact IT@xjtlu.edu.cn for support.

MDR is a screen recording software that automatically uploads to Mediasite (video.xjtlu.edu.cn). MDR is integrated with ICE for easy lesson creation. Videos can be managed from your [Personal Mediasite Page](#) and posted to your lessons on [ICE](#).

[The Digital Learning Resources Hub](#) is a well-equipped recording studio that is managed by ILEAD professionals that can assist with content production. Support provided by ILEAD, contact DgtlLearnResHub@xjtlu.edu.cn for support.

For additional assistance please contact us at IT@xjtlu.edu.cn.

XJTLU | MITS